

## Camera & Tripod Thread Sizes & Quick Release Plates

Most consumer **cameras** (Nikon Canon Fuji Sony etc) are fitted with 1/4-20 UNC threads.

Larger, Medium format and large format professional **cameras** and lenses may be fitted with 3/8-16 UNC threads.

What size is a tripod head screw?

A common standard for base mounts on photographic tripod equipment is a 1/4-20 screw on the tripod (a screw that is **1/4 inches** in diameter, with 20 threads per inch) and a matching receptacle on the camera base.

Below the Manfrotto 148KN is screwed on top of a 1/4" thread to allow cameras that take a 3/8" from B&H in USD.

Home / Photography / Tripods & Support / Tripod Accessories / Misc. Parts & Accessories / Manfrotto 148KN

### Manfrotto 148KN Reducing Bushing Set - 3/8"-16 to 1/4"-20 (Set of 5)

B&H # MA148KN • MFR # 148KN



In Stock

Order now to ship Tue Feb 13

Calculate Shipping

★★★★★ Reviews 40 | Q&A 4

\$0.00 Tax Collected Outside NY and NJ ⓘ

You Pay: **\$12.73**

1 QTY

**Add to Cart**

Add to Wish List

**True Know-How**  
Ask Our Experts  
Live Chat: 800.506.6969  
Request Callback, Email



Email Print

#### Recommended Accessories [View All >](#)



Eclipse Tools 9-in-1 Multi-Tool with Storage Pouch (Teal)  
**\$10.79**

Add to Cart



Pelican 1920B MilyLite LED Flashlight (Green)  
**\$25.49**

Add to Cart



ZEISS Jumbo Microfiber Cloth (12 x 16")  
**\$3.70**

Add to Cart



Amphoto Amphoto Book: Understanding Exposure, 4th  
**\$16.84**

Add to Cart

OVERVIEW

SPECS

QUICK COMPARE

REVIEWS 40

Q&A 4

ACCESSORIES

This is a set of five reducing bushings from **Manfrotto**, used to mount any accessory with a female 3/8"-16 threaded socket onto a 1/4"-20 male screw.

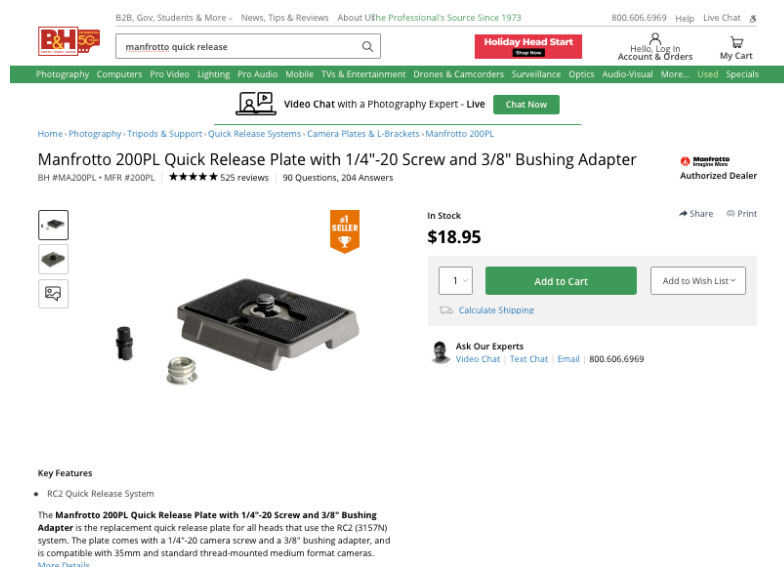


I highly recommend using a quick release system for attaching your camera to a tripod or camera stand. This allows you to attach and detach the camera to and from the tripod in seconds with ease.

The most commonly used systems used in the industry are

- Manfrotto rectangular 200PL (DSLR)
- Manfrotto hexagonal (hex plate) (Medium format)
- Manfrotto rounded RC4 (Large Format)
  
- Arca Swiss dovetail (Medium & large format)
  
- 3 Leggered Thing Dovetail (DSLR)
  
- Linhof QuickFix 1 (Medium & large format)
  
- And some like Hasselblad, Cambo and other camera or tripod manufacturers have specifically designed systems for only their cameras.

A plate is usually screwed onto the bottom of your camera either by screw or allen key and left on. This then engages with the correct receptacle on top of the tripod head. Generally as the camera weight increases then usually a more stable quick release is required. Most operate as a 2 stage process to avoid accidental disengagement. See the main ones listed above below.



The screenshot shows a product page for a Manfrotto 200PL Quick Release Plate. The page includes a navigation bar with categories like Photography, Computers, and Pro Video. The product title is "Manfrotto 200PL Quick Release Plate with 1/4"-20 Screw and 3/8" Bushing Adapter". The price is listed as \$18.95, and it is marked as "In Stock". There are buttons for "Add to Cart" and "Add to Wish List". The page also features a "Key Features" section and a "Video Chat with a Photography Expert" button.

Key Features

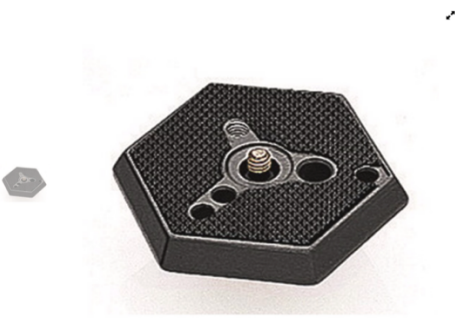
- RC2 Quick Release System

The **Manfrotto 200PL Quick Release Plate with 1/4"-20 Screw and 3/8" Bushing Adapter** is the replacement quick release plate for all heads that use the RC2 (3157N) system. The plate comes with a 1/4"-20 camera screw and a 3/8" bushing adapter, and is compatible with 35mm and standard thread-mounted medium format cameras.



← BACK

## Hexagonal Assy Plate with 3/8" screw



030-38 ★★★★★ 5 (2)

- Quick release hexagonal plate
- Universal 3/8" thread attachment
- Made of aluminium

AU\$ **79.95**

Total price includes GST

[Technical Specifications](#)

### Description

Plate with 3/8" screw.

...

### Specifications

Weight  
0.1 kg

[Technical #1 Full list](#)

← BACK

## Quick Release Plate Adapter



394 ★★★★★ 4 (3)

- RC4 Quick Release System
- Equipped with 2 built-in spirit levels
- Supplied with 1/4" and 3/8" camera fixing screws

AU\$ **169.95**

Total price includes GST

[Technical Specifications](#)

### Description

Supplied with 1/4" and 3/8" camera fixing screws. Fixing 1/4" and 3/8"; thread. 410PL plate included. Equipped with 2 built-in spirit levels.

### Specifications

Weight  
0.28 kg

Material  
Aluminium



[Video Chat with a Photography Expert - Live](#) [Chat Now](#)

Home > Photography > Tripods & Support > Quick Release Systems > Camera Plates & L-Brackets > Arca-Swiss 802209

### Arca-Swiss Universal Quick Release Plate with 1/4" Screw (40mm) and Rubber Surface

BH #AR0RPA0.25 • MFR #802209 ★★★★★ 48 reviews | 12 Questions, 31 Answers

**Authorized Dealer**



In Stock [Share](#) [Print](#)

**\$65.00**

Pay in 4 interest-free payments of \$16.25 with [PayPal](#). [Learn more](#)

1 [Add to Cart](#) [Add to Wish List](#)

[Calculate Shipping](#)

**Ask Our Experts**  
[Video Chat](#) [Text Chat](#) [Email](#) 800.606.6969

#### Recommended Accessories [View All](#)

- [Sunwayfoto Arca & Manfrotto Compatible](#) \$34.95 [Add to Cart](#)
- [Vello COOLTOOL Camera Plate Combo Tool](#) \$7.99 [Add to Cart](#)
- [Olben 3/8"-16 to 1/4"-20 Reducer Bushing](#) \$3.29 [Add to Cart](#)
- [Vello Two-Axis Hot-Shoe Bubble Level](#) \$18.99 [Add to Cart](#)

[OVERVIEW](#) [SPECS](#) [REVIEWS 48](#) [Q&A 12](#) [ACCESSORIES](#)

#### Arca-Swiss 802209 Overview

This Arca-Swiss Universal 40mm (1.57") quick release plate has a 1/4"-20 camera screw, and features a rubberized surface for a more secure connection. Also compatible with the many other Arca-type quick release systems, e.g. ArcaTech, Foba, Graff, Wimberley, etc.

#### In the Box

Arca-Swiss Universal Quick Release Plate with 1/4" Screw (40mm) and Rubber Surface  
 Limited 3-Year Manufacturer Warranty

[Video Chat with a Photography Expert - Live](#) [Chat Now](#)

Home > Photography > Tripods & Support > Quick Release Systems > Camera Plates & L-Brackets > 3 Legged Thing Base70

### 3 Legged Thing BASE70 Arca-Swiss Compatible 70mm Wide Quick Release Plate (Copper/Orange)

BH #3LBASE70C • MFR #BASE70-C ★★★★★ 20 reviews | 9 Questions, 13 Answers

**Authorized Dealer**



In Stock [Share](#) [Print](#)

**\$34.99**

3 Legged Thing BASE70 Arca-Swiss Compatible 70mm Wide Quick Release Plate (Copper/Orange) [payments of \\$8.75 with PayPal](#). [Learn more](#)

1 [Add to Cart](#) [Add to Wish List](#)

[Calculate Shipping](#)

Color  
 Copper/Orange  Metallic Slate/Gray

Size  
 70mm  85mm

**Ask Our Experts**  
[Video Chat](#) [Text Chat](#) [Email](#) 800.606.6969

#### Key Features

- Arca-Type Compatible
- Adjustable Camera Screw Channel
- 1/4"-20 Stainless Steel Camera Screw
- Rubberized Anti-Twist Surface

The **BASE70 Arca-Swiss Compatible 70mm Wide Quick Release Plate** from **3 Legged Thing** is a mounting plate with a 1/4"-20 stainless camera screw and a rubberized anti-twist surface. The plate has a channel that conveniently allows you to move the screw position according to your requirements. Compatible with Arca-type quick release

[More Details](#)



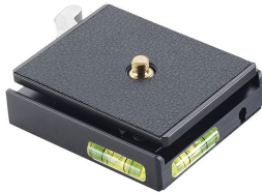
Video Chat with a Photography Expert - Live [Chat Now](#)

Home > Photography > Tripods & Support > Quick Release Systems > Quick Release Clamps > Linhof 003880

## Linhof Quickfix I Small Quick Release Adapter with Plate & Bubble Levels

BH #LIQF003880 • MFR #003880

Authorized Dealer



**Special Order**  
Expected availability: 2-4 weeks

[Share](#) [Print](#)

**\$412.99**

Pay in 4 interest-free payments of \$103.25 with PayPal. [Learn more](#)

1 [Add to Cart](#) [Add to Wish List](#)

[Free Standard Shipping](#)

[Protect Your Gear](#) Add a protection plan from \$54.99 [See Options](#)

**Ask Our Experts**  
[Video Chat](#) [Text Chat](#) [Email](#) 800.606.6969

### Key Features

- Two Bubble Levels
- All-Metal Design
- 1/4"-20 and 3/8"-16 Tripod Threads
- 1/4"-20 Camera Screw

[Show More](#)

The **Linhof Quickfix I** is a small quick release adapter with a camera plate and two bubble levels, one for forward-to-back tilt and the other for side-to-side tilt. The Quickfix I features a 3/8"-16 tripod thread with a reducer bushing for 1/4"-20 attachments. The 1/4"-20 camera screw is secured into place via the included Allen key. The assembly

[More Details](#)

### Recommended Accessories [View All](#)

- Oben 3/8"-16 to 1/4"-20 Reducer Bushing
- Vello COOLTOOL Camera Base Camera Foot
- Oben Tripod Hanger (1/4"-20)
- Vello Two-Axis Hot-Shoe Bubble Level

